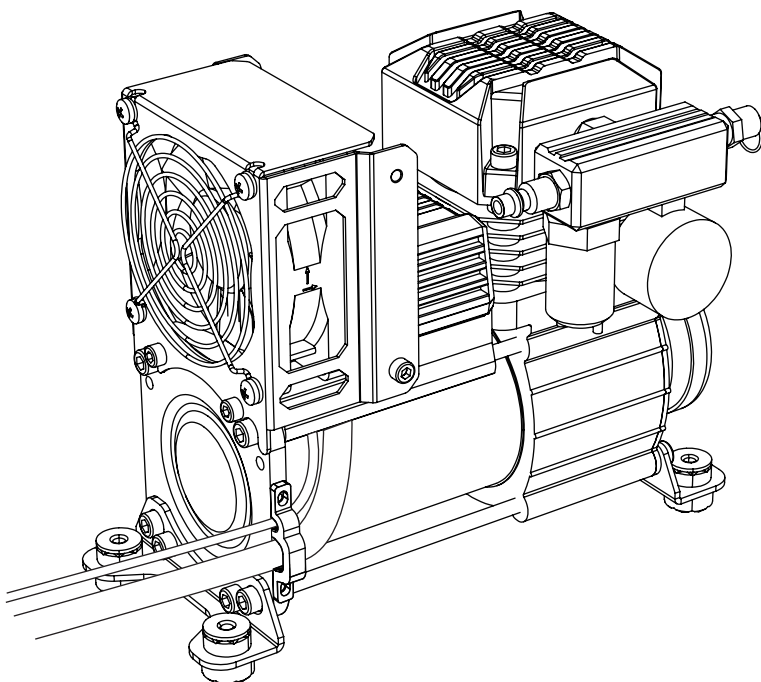


VOLCANO[®]

MODEL NUMBER:

☐ MSBL600C-12V

☐ MSBL600C-24V

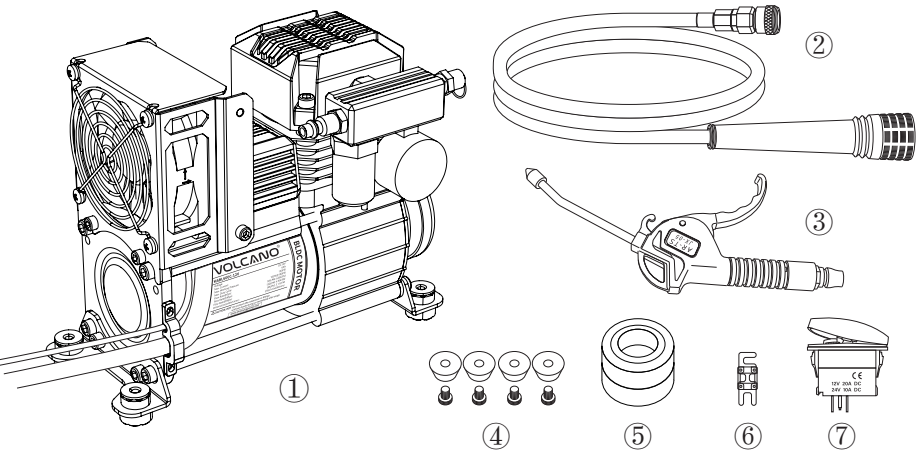


User Manual

IMPORTANT: To ensure the correct installation and safe use of the product, please read this user manual thoroughly before any installation or use.

www.moosungpump.com

Product Overview



Parts List :

Item	Content	QTY
1	MSBL600C Air Compressor With Cable	1
2	Air Hose	1
3	Blow Gun	1
4	Vibration Isolation And Fixing Bolts	4
5	Filter Elements	2
6	Fuse	1
7	On/Off Switch	1

Product Specification

Model	MSBL600C-12V	MSBL600C-24V
Working Voltage	DC-12V	DC-24V
Max. Current	65A	38A
Max. Pressure	150PSI	
Duty Cycle@100psi	100%	
Flow Rate(13.8V)	0psi @195L/min(6.89CFM) 40psi@130L/min(4.59CFM) 90psi@88L/min(3.11CFM)	
Dimension (L x W x H)	256x141x206(mm)	
Fuse	80A	60A
Power Cord Kit	6AWG	8AWG
Power Cord(Red)	3M	
Power Cord(Black)	1M	
Air Hose	1.5M	

Pre-installation Preparation

Guideline For Selecting Mounting Location:

Attention: The ideal location for the air compressor should consider all of the following points:

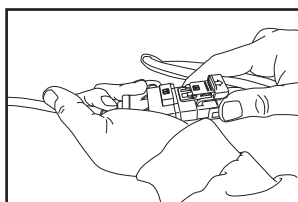
- (1) The selected location should provide quick and easy access to the air compressor for connecting the inflation kit & air hose for tire inflation.
- (2) Stay away from heat sources (such as being too close to exhaust system components or directly behind the radiator, both places are not suitable).
- (3) Avoid the place where damage or wear caused by sand or gravel splashing from the road happens.
- (4) Avoid prolonged exposure to direct sunlight.
- (5) The mounting location should be away from excessively wet places (for example, directly exposed to road spray or rainwater runoff).
- (6) The location should be higher than the possible highest waterline to avoid damage caused by immersion when crossing water area.
- (7) This place must allow dry and cool air to flow freely into the air filter (unless an inlet extension hose is used. If an extension hose is used, the filter and extension hose must be positioned accordingly).
- (8) The selected location should provide easy access for the disassembly of the filter and cleaning operations (unless an inlet extension hose is used).
- (9) If an inlet extension hose is to be used, the air inlet position should try to minimize the distance (hose length) between the air compressor and the actual air inlet point.
- (10) The position must be able to securely fix the air compressor installation bracket with the attached bolts.
- (11) Due to the need to install bolts and washers, the location must allow smooth installation of the both sides of the mounting bracket.
- (12) When the air compressor runs for a long time, the surface of the machine will heat up, so the compressor should be placed away from places where children or pets may come into contact.
- (13) The location should follow the shortest connection distance with the battery and use a protected and accessible space as the wiring plan for the air compressor power cord connection. The shorter the connection length between the power cord of the air compressor and the battery,

the smaller the resistance, which can better ensure the optimal performance of the air compressor.

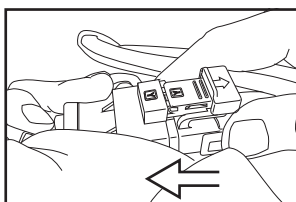
- (14)The air compressor should not be installed near equipment that is sensitive to motor electromagnetic fields (such as compasses, radio/GPS antennas, engine sensors, etc.).
- (16)Do not install the air compressor in a position without suspension support (such as on the axle or engine block).

Installation Steps

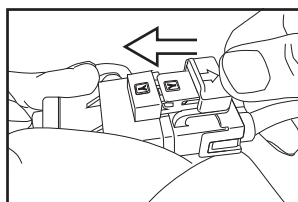
1. Assembly Of Power Cord Connectors



(1)Push the male connector into the female terminal.

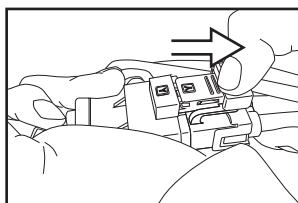


(2)Insert the male connector till hear the sound “click”, make sure the connector is right placed in the first fixed position.

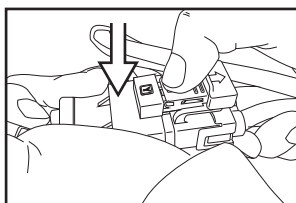


(3)Press down the green button and push forward to the second fixed position.

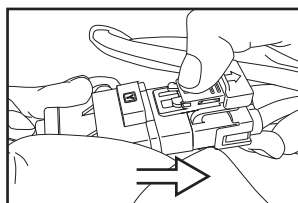
2. Disassembly Of Power Cord Connectors



(1)Press down the green button and pull backward to release from the second fixed position.



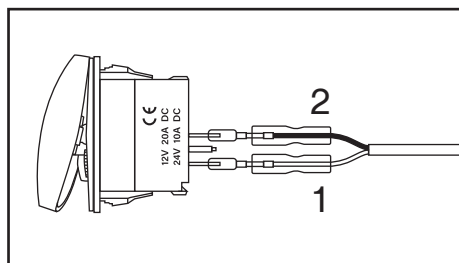
(2)Press down the front part of the green button (as shown in the figure), and pull back to release from the first fixed position.



(3)Pull out to release the male connector from the female terminal.

3. Wiring Method Of Switch

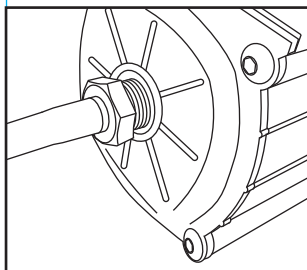
The Red positive electrode is connected to point 1, and the black negative electrode is connected to point 2. (As shown in Figure 1)



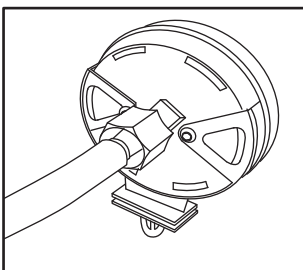
(Figure 1 Wiring method of switch)

4. Installation Of Air Inlet Extension Hose:

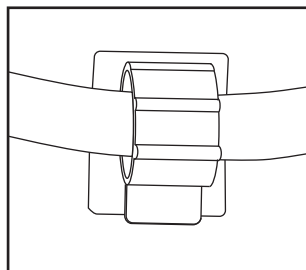
- A. Connect the A-type connector to one end of the inlet extension hose, and then connect the A-type connector to the MSBL600C inlet port. (As shown in Figure 2)
- B. Connect the B-type connector to one end of the inlet extension hose, and then connect the B-type connector to the filter interface. (As shown in Figure 3)
- C. Find the optimal mounting position for the filter and fix it directly by inserting it into the gap.
- D. The inlet extension hose can be fixed with the attached hose holder. (As shown in Figure 4)



(Figure 2 A-type connector mounted)



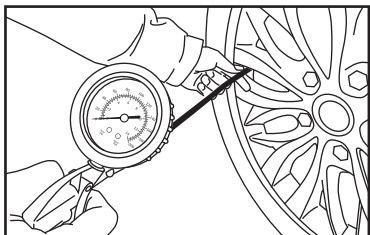
(Figure 3 B-type connector mounted)



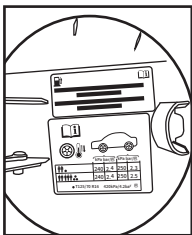
(Figure 4 hose holder mounted)

Tire Pressure Guidelines

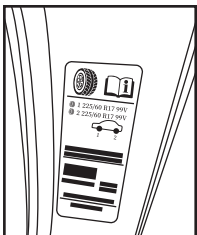
A. Inflation



(Figure 5: use tire pressure gun to detect tire pressure and inflation)
(*The tire pressure gun in the figure is not included. If needed, you can consult a nearby dealer to purchase it.)



(Figure 6: internal label of the fuel tank cap)



(Figure 7: label below B-pillar)

Recommended upper limit for car tire pressure: (refer to GB/T2978-2014)

Unit	Sedan/Urban SUV		Reinforced Tire		Passenger Car Tires	Spare Tire
	General road surface	Continuous high-speed driving	General road surface	Continuous high-speed driving	Max. upper limit	Standard pressure
Kpa	240-250	275	280-290	305	350	420
Bar	2.4-2.5	2.75	2.85-2.95	3.05	3.5	4.2
Psi	34.6-36	40	40.6-42	44	51	60
Kg	2.45-2.55	2.8	2.85-2.95	3.0	3.55	4.3

The reminder label for tire pressure recommended by car manufacturers for original tires can generally be stuck on the inside of the fuel tank cap or below the B-pillar (as shown in Figures 6 and 7).

Assuming that the original tires have not been changed, inflating them according to the tire pressure recommended by the car manufacturer generally meets safety requirements. If a tire of a different specification is replaced, it is necessary to inflate it according to the recommended tire pressure of the new tire, which requires special attention!

Operation Instructions

For safe operation, please carefully read and follow the following operating instructions:

- 1. Please start the car before using the air compressor as in this way, it will use the engine power supply for operation. It can effectively avoid the consumption of car battery power and prevent the failure to start the vehicle.**
2. After inflation is completed, it is recommended to turn off the power switch of the air compressor first, and then perform the deflation operation (such as press the deflation button on the inflation gun). Otherwise, some high-pressure air may remain inside the air compressor. When connecting the air hose quick connector to the compressor, it needs to use more force to connect it vertically.
3. This compressor has an overheat protection function. When the motor overheats, the machine will automatically shut down and stop running. Please turn off the power immediately when this happens. Restart to operate after the air compressor cools off.

Cautions

1. Please do not disassemble the machine, and do not repair or modify it yourself. For all after-sales service and repair matters, please consult the authorized service provider of the manufacturer.
2. Do not use it in damp, rainy, or excessively humid environments.
3. The air compressor will generate heat after long-time operation. To reduce the risk of burns, please do not touch the exposed metal parts of the machine, especially the air outlet area, with your hands.
4. Ensure to use this machine in a well-ventilated area and do not operate it in flammable or explosive environments.
5. Do not use for inflating any medium other than air.
6. Do not use any tools or accessories to connect this machine until other tools or accessories are determined to be suitable for use.
7. Do not point the air outlet port toward a person or any part of the human body.
8. Please inflate following the pressure requirement recommended by the inflatable products' manufacturer. Over-inflation can cause bursting

and result in personal or property injury.

9. If you need to use extension switch wires, please choose shielded wires to avoid interference from surrounding electromagnetic signals on the switch signals.

Maintenance Guidelines

1. This air compressor is equipped with permanent lubrication and is maintenance free. Never try to lubricate this machine.
2. Regularly inspect and clean the dust and dirt from the inlet filter and cooling fins of the air compressor.
3. Please do not modify or disassemble this machine without authorization. All repairs should be carried out by the manufacturer or authorized service organizations.